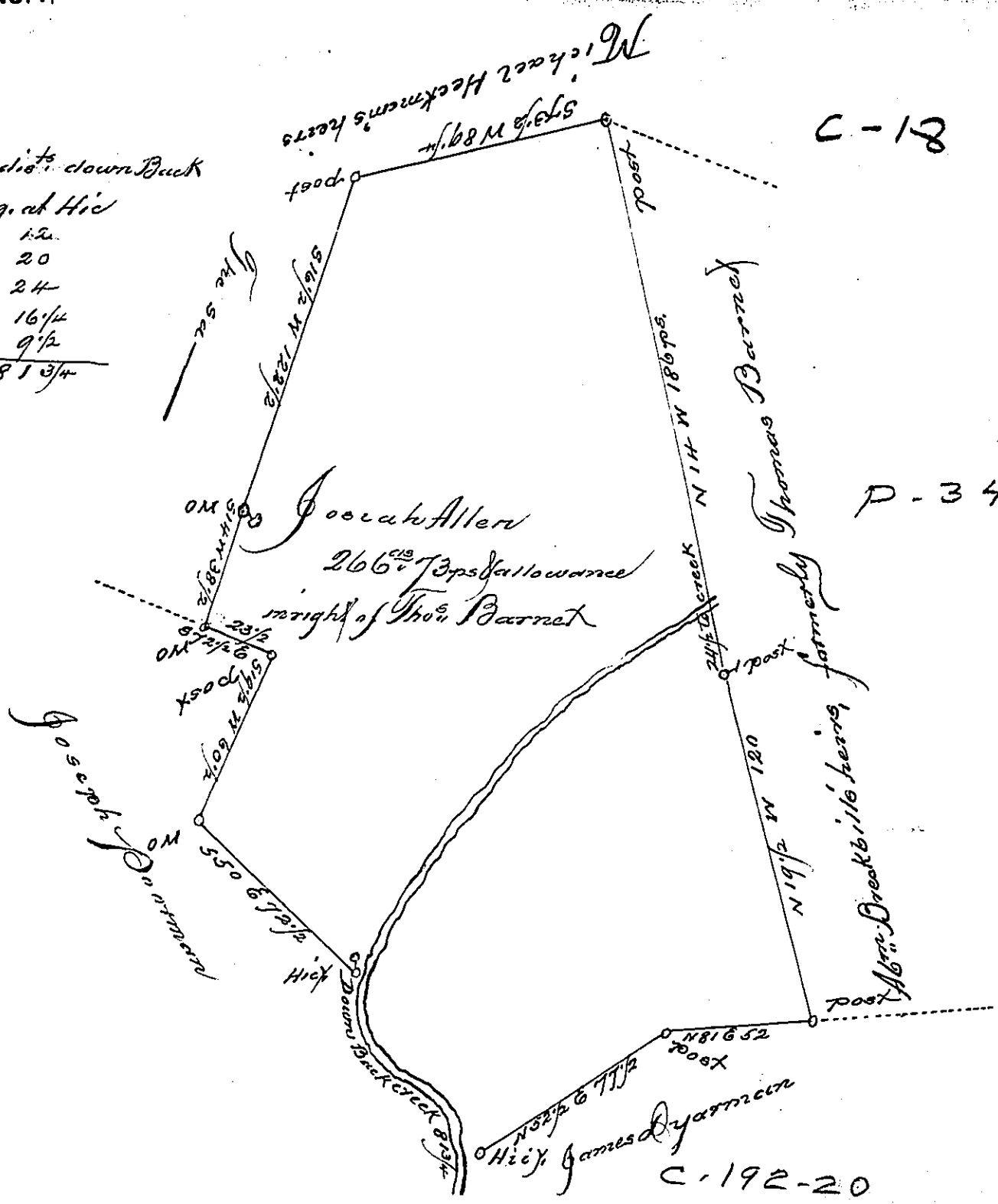


courses & dist^s down Back

Course	Dist	at	High
S	6	12	
S	20 1/2	E	20
S	54	E	24
S	70	E	16 1/4
S	6 1/2	W	9 1/2
			81 3/4



C-192-20

A. Draught of a Tract of Land situated in Hamilton Township Franklin County (formerly Cumberland) containing two hundred & sixty six Acres and seventy three perches and allowance of six per cent for Roads &c, Surveyed the 23^d day of August 1822, in pursuance of a warrant granted to Thomas Barnett, bearing date the 4th day of September, 1767

Wm. S. Davis D. J.

To, Samuel Heckman Esq:
Surveyor Genl of Penna.

IN TESTIMONY that the above is a copy of the original remaining on file in the Department of Internal Affairs of Pennsylvania, made conformably to an Act of Assembly approved the 16th day of February, 1833, I have hereunto set my Hand and caused the Seal of said Department to be affixed at Harrisburg, this

5th day of January, 1907

Francis P. Brown
Secretary of Internal Affairs.